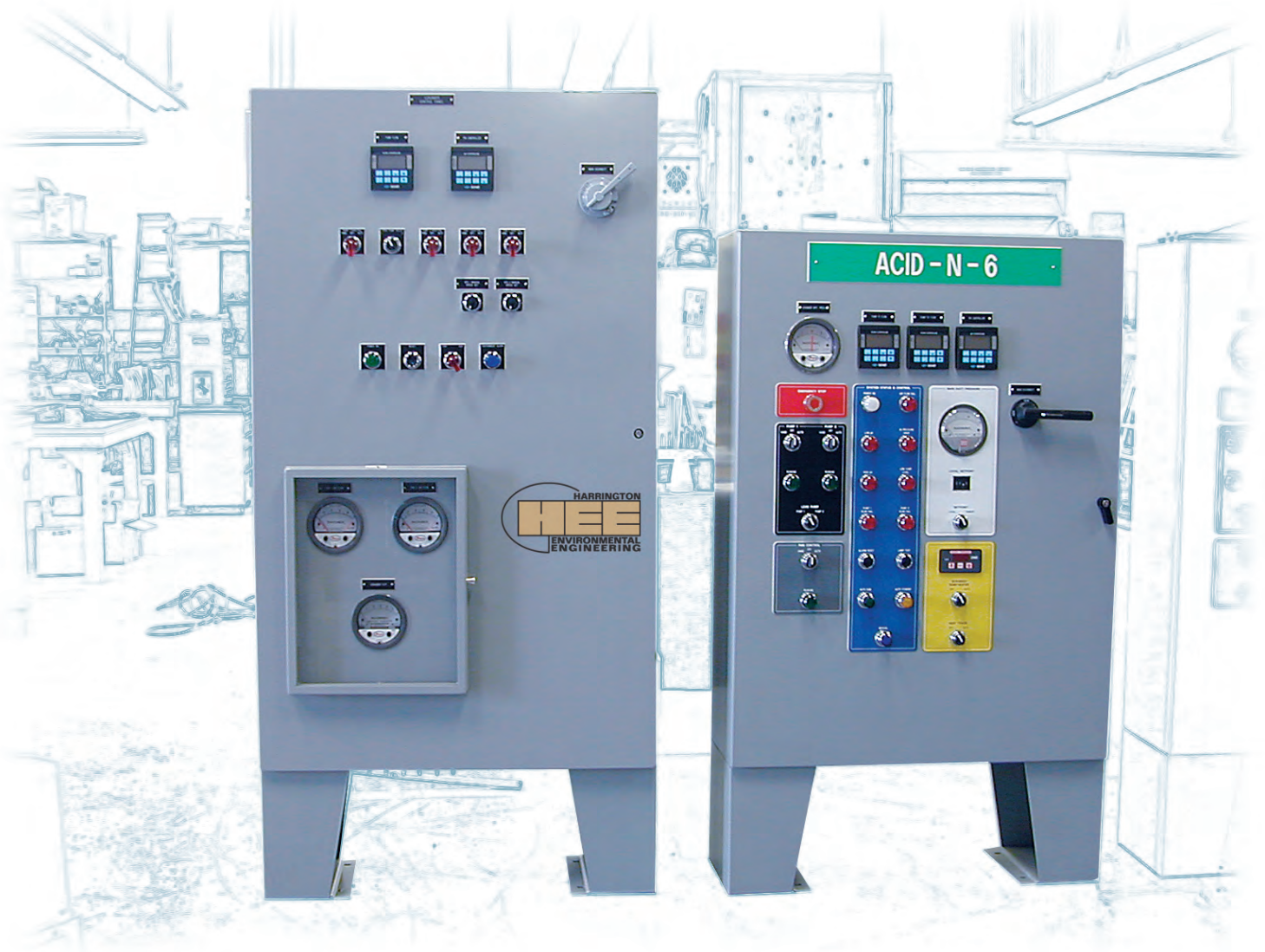
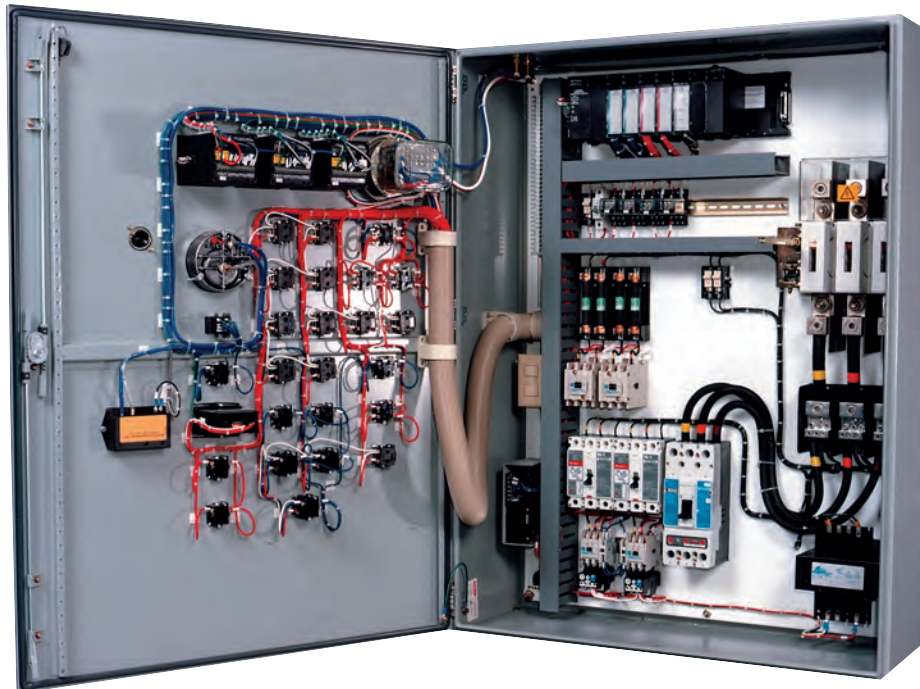


HEE Control Panels





HEE Environmental Engineering offers premium quality control panels and control systems to complement our quality line of air pollution control equipment. Your control panel can be customized to your specific applications. We can assist you with our extensive control panel design and engineering experience. We will also assist you in writing the specification to assure that the control panel you select will meet your exact needs in efficiency, control and automation.

An HEE Control Panel can monitor and control the following exhaust fan conditions:

- Motor overload
- Air flow indicator
- Excessive vibration
- Low discharge pressure
- High fan bearing temperature
- High motor temperature
- High discharge pressure
- High discharge temperature

An HEE Control Panel can monitor and control the following scrubber conditions:

- Motor overload
- Liquid flow indicator
- Water make-up rate
- High pressure drop
- Low sump level
- High sump level
- pH of recirculating liquid
- Water temperature
- TDS in the recirculating liquid

Drawings will be provided for your approval and will include the following:

- Electrical wiring diagram
- Component layout
- Door layout
- Bill of materials
- Dimensional outlines
- Ladder logic

HEE Control Panels

HEE's control systems cover the spectrum from simple combination motor starters, to fully automated control systems with automatic duct pressure control, automatic lead lag of standby equipment, man-machine interface and factory management system capabilities.

HEE's control panels can be engineered to your specifications using the components and manufacturers you require. HEE controls ensure the reliability of your exhaust systems operation.

A very simple control panel may consist of (1) a main disconnect to remove power from the control panel, (2) a motor starter with thermal overloads, (3) a green start button and (4) a red stop button.

A more complex control panel may include motor

controls plus many of the following to provide a completely automated control panel:

- Contacts for remote start/stop operation
- Contacts for remote alarm indicators
- Variable frequency drives (VFD)
- Electronic soft start or Wye-Delta starter
- Sump heater controller with display
- Alpha/Numeric status display
- pH, flow, ORP, TDS, or conductivity controller
- Alarms to indicate loss of air flow
- Alarms to indicate loss of liquid flow
- Lead lag operation of two motors

The best assurance of proper integration is to have the exhaust system and control system engineered and manufactured by a single source. HEE's control panels and systems are designed and manufactured to U.L. 508 and N.E.C. standards.

Options Available

- Contact field service and start up supervision
- Unit mounted and pre-wired control panels
- Underwriters Laboratory approved panels
- NEMA 12, 4, 4X and explosion proof enclosures
- Instrumentation panels
- Non-fused and fused disconnect switches



Simplicity Process Monitoring Equipment

Features:

- Measure, control and record.
- NEMA 4x outdoor environment enclosure.
- 62-day strip chart recorder.
- Process indicator lights.
- Alarm horn with silence push button.
- Simple push-button operation.
- Standard 120 VAC supply voltage.
- System protection: circuit breaker and GFCI reset type protection.
- 24 VDC instrument supply.
- Fault alarm; high and low process condition.
- Remote analog connection point.
- Optional monitors and controllers.
- Custom options available consult factory.

The Simplicity series of monitors/controllers with recorders provide a reliable method of monitoring, controlling and recording process levels of various industrial and chemical solutions. Featuring an extensive list of standard components, the Simplicity series of wall-mounted enclosures offer a wide variety of optional instrumentation choices.



Optional AquaMetrix Monitors and Controllers



pH



Flow



Conductivity

Transmitters

Monitors

Controllers

Flow



3-8550



3-5500



3-9010

pH



3-8750



3-5700



3-9030

ORP



3-8750



3-5700



3-9040

Conductivity/TDS



3-8850CR



3-5800CR



3-9050CR



Additional configurations also available.